



CATCHPOLE  
& RYE

CATCHPOLE & RYE

PURVEYORS OF FINE SANITARY WARE



# WELCOME



## CATCHPOLE & RYE - Purveyors of Fine Sanitary Ware

This brochure has been a complete labour of love. It features all of our finest pieces and we hope it conveys our passion and commitment to manufacturing only the very best in quality sanitary ware.

Situated in the picturesque village of Pluckley in Kent, every single bath we manufacture is 100% cast iron and 100% British made. In our opinion, every bath is a unique piece in its own right and we pride ourselves on our superior craftsmanship and exceptional finish.

All our baths are poured using the same techniques that our foundry has been using for over 100 years. Le Bain de Bateau for example is an exact replica of an original bath which was designed and manufactured in France around 1890 – if it looks perfect after 120 years, why change it?

*Our philosophy is simple; fashions come and go but classics will last forever.*

Alongside our own extensive collection of sanitary ware and bespoke items we also stock an array of beautiful antiques, many of which have inspired us over the years. These antiques have stood the test of time, and we believe our sanitary ware will also be the timeless classics of the future.

We have the largest variety of cast iron baths anywhere in the UK, and an enviable 3000sq ft of showroom full of exquisite items. As well as undertaking commissioned works from cast metal, we also offer a complete design service, working alongside interior designers and individual customers who are striving to create the perfect bathroom.

*We never compromise on quality, attention to detail or personal service.*

We truly appreciate the beauty of all our sanitary ware, and once you have seen our wide range of products, we hope that you will too.

*Tony O'Donnell*

Tony O' Donnell - Managing Director



# BATHS

*Bathing:* To take a bath, to become immersed in a vessel containing liquid. [source: Middle English *bathe*, from Old English *batien*]





# LE BAIN DE BATEAU



## Quintessentially French

Based on an original 19th century French design, Le Bain de Bateau is the definitive French roll top bath set on its own integral plinth. This bateau will definitely stand the test of time and form the centrepiece of any bathroom.

Exterior Finishes: Painted, Burnished or Polished. *(See page 83)*

Waste outlet is located in the centre of the bath.

DIMENSIONS	
Length	1630mm
Width	700mm
Height <i>(in middle)</i>	650mm
Height <i>(at ends)</i>	750mm

## FINISHES



PAINTED EXTERIOR



POLISHED EXTERIOR



BURNISHED EXTERIOR



# LE BATEAU GRAND



## Truly Superior

Originally from France, Le Bateau Grand is a truly superior bath in every way. Beautifully proportioned, the interior of this double ended bath is much deeper and wider than a standard Bateau. The cast rises gracefully from its moulded plinth to finish with an exquisite rounded rim.

Exterior Finishes: Painted, Burnished or Polished. *(See page 83)*  
Waste outlet is located in the centre of the bath.

### DIMENSIONS

Length	1590mm
Width	730mm
Height <i>(in middle)</i>	630mm
Height <i>(at ends)</i>	730mm

## FINISHES



POLISHED EXTERIOR



PAINTED EXTERIOR



BURNISHED EXTERIOR



One of the earliest cast iron baths

The Saracen Bath is a true replica of a bath manufactured in Lyon in the mid 19th century. Its primitive style reflects its status as the earliest cast iron bath. The Saracen also comes with the option of having cast iron feet.

Exterior Finishes: Painted, Burnished or Polished. *(See page 83)*

Waste outlet is located in the centre of the bath.

DIMENSIONS	
Length	1630mm
Width	700mm
Height <i>(in middle)</i>	580mm
Height <i>(at ends)</i>	670mm

FINISHES



PAINTED EXTERIOR



BURNISHED EXTERIOR





# THE COPPER BATEAU



## Make a grand statement

Copper Baths were originally designed for bathing in front of the fire. These baths had to be light, so that they could be easily carried from room to room. Although lighter than its cast iron cousins, this Bateau is sturdy and made entirely from high gauge copper. It is hand beaten, polished and then sealed, giving each bath a unique hand finished patina.

The Copper Bateau comes in three different finishes. All Copper, Copper with Tinned Interior or All Silver. The All Silver is a copper bath completely plated in tin and then polished to achieve a high platinum appearance – stunning!

Waste outlet is located in the centre of the bath.

### DIMENSIONS

Length	1750mm
Width	700mm
Height ( <i>in middle</i> )	650mm
Height ( <i>at ends</i> )	780mm

### FINISHES



ALL COPPER



ALL SILVER



SILVER INTERIOR



# LE PIAF



## The epitome of French flair

This is our version of the original French Empire double-ended bath. Made from cast iron and sitting on four flamboyant feet, it epitomises 19th century French flair and elegance. Le Piau is only available with a painted exterior finish.

Exterior Finish: Painted only.

Waste outlet is located towards the rear of the bath.

### DIMENSIONS

Length 1730mm

Width 800mm

Height 800mm



# LA ROMAINE



## Phoenix from the Flames

Another bath inspired by a late 19th century French design. This magnificent rolled edged bath is rectangular in shape, with straight sides that flow down to the most amazing Phoenix-like feet. This distinctive bath would enhance any period bathroom.

Exterior Finish: Painted only.

Waste outlet is in the exact centre of the bath.

### DIMENSIONS

Length 1670mm

Width 780mm

Height 700mm







# LA PROVENCE



## A simple classic

Much deeper than the equivalent English version, this traditional single-ended French bath stands on four pretty cast iron feet. Simple and classic.

Exterior Finish: Painted only.

Waste outlet is located at the tap end of the bath.

### DIMENSIONS

Length 1700mm

Width 760mm

Height 600mm



# LE BATEAU FOIX



## Petit Pied

Cast from the same mould as Le Bain de Bateau, but without the plinth, Le Bateau Foix stands on dainty understated cast iron feet. The bath retains all the beauty of Le Bain de Bateau and allows full access to plumbing without disturbing the floor.

Exterior Finishes: Painted, Burnished or Polished. *(See page 83)*

Waste outlet is in the exact centre of the bath.

### DIMENSIONS

Length 1630mm

Width 700mm

Height *(in middle)* 750mm

Height *(at ends)* 850mm



# VICTORIAN CANOPY BATH

The height of Victorian genius, these Zinc canopy baths are generally 8 feet tall and have 8 internal rain bars and a 12inch shower rose.

The tap control block is a triumph of design and engineering. A very grand statement!



# ANTIQUE BATHS



All our antique baths are true originals, which have been lovingly restored to their former glory. There are many different styles on display, but the ones shown here are the most typical.



FRENCH EMPIRE

This true original from France is an elegant and classic double ended bath. Comes in a variety of depths, sizes and beautiful cast iron feet.



JOHN BOLDING PLUNGER

These exclusive baths date from the early part of the 1900s and were originally installed in stately homes. They come with unusual waste mechanisms and are often quite large in size – sometimes up to 7 feet long!



NOUVEAU SLIPPER

A feminine, high backed bath, combining tradition with elegance and sitting on four dainty cast iron feet. A must for any opulent Boudoir!



SABOT

Taking its name from the French for 'slipper' the Sabot is essentially the same shape as the Nouveau Slipper bath but sits on its own plinth.



## BASINS & WASHSTANDS

*Basin:* a circular container with a greater width than depth, used chiefly to hold water or other liquid, esp. for washing. [source: Middle English, from Old French *basin*, from \**baccus*, container, of Celtic origin.]





# THE EMPRESS



Classical in design, The Empress Range of sanitary ware is made from the highest quality traditional fireclay. With its rounded curves that ooze style and elegance, it would add a hint of opulence to any bathroom.



THE EMPRESS GRAND

Width 1070mm Depth 580mm Height 820mm  
Available: 1, 2 and 3 tap holes



THE EMPRESS DOUBLE

Width 1200mm Depth 580mm Height 820mm  
Available: 1, 2 and 3 tap holes



THE EMPRESS BIDET

Width 365mm Depth 590mm Height 390mm  
Available: 1 tap hole



THE EMPRESS CONSOLE ON FRAME

Width 1000mm Depth 540mm Height 860mm  
Available: 1, 2 and 3 tap holes



THE EMPRESS CONSOLE ON BRACKETS

Width 1000mm Depth 540mm Height Adjustable  
Available: 1, 2 and 3 tap holes



THE EMPRESS BASIN

Width 710mm Depth 540mm Height 820mm  
Available: 1, 2 and 3 tap holes



# THE VICTORIA



Traditional in style, The Victoria Range encompasses the charms of Olde English sanitary ware from days gone by. Its detailed edging typifies that of Staffordshire Pottery from the late 19th century.



THE VICTORIA BASIN

Width 660mm Depth 525mm Height 864mm  
Available: 1, 2 and 3 tap holes



THE VICTORIA CONSOLE

Width 1025mm Depth 560mm Height 920mm  
Available: 1, 2 and 3 tap holes



THE VICTORIA CLASSIC

Width 625mm Depth 490mm Height 860mm  
Available: 2 tap holes



THE VICTORIA CORNER

Width 670mm Depth 540mm  
Height 860mm  
Available: 1, 2 and 3 tap holes



THE VICTORIA CLOAKROOM

Width 455mm Depth 380mm  
Height 200mm  
Available: 2 tap holes



THE VICTORIA BIDET

Width 340mm Depth 580mm  
Height 445mm  
Available: 1 tap hole





# WASHSTANDS



From the flamboyant heights of the Victorian Era to the intricate designs of the Arts and Crafts movement, washstands have remained an integral part of many an English home. Cast to order and finished to the highest standards, our selection of washstands have all been influenced by original designs.



THE VICTORIAN WASHSTAND WITH OVERMANTEL  
Width 660mm Depth 550mm Height 1800mm  
Available: 1, 2 and 3 tap holes



THE VICTORIAN WASHSTAND  
Width 660mm Depth 550mm Height 870mm  
Available: 1, 2 and 3 tap holes



COPPER CHERUB WASHSTAND\*  
Width 660mm Depth 550mm Height 1800mm  
Available: 1, 2 and 3 tap holes



THE NOUVEAU WASHSTAND  
Width 660mm Depth 550mm Height 800mm  
Available: 1, 2 and 3 tap holes



POLISHED CHERUB WASHSTAND\*  
Width 660mm Depth 550mm Height 1800mm  
Available: 1, 2 and 3 tap holes

Washstands can also come painted in a colour of your choice. Please refer to price list for variations. \*With Overmantel.  
Feature Photograph - Polished Cherub Washstand with Overmantel





# TAPS & SHOWERS

*Tap:* A valve and spout used to regulate delivery of a fluid at the end of a pipe. *[source: Middle English tappe, from Old English tapp.]*



These wonderful French-style taps were produced from an original turn of the century design and have a distinctive hand wheel. These taps are inscribed with French writing, fired onto crackle-glazed ceramic indices.



LA LOIRE BATH SHOWER MIXER  
ON STANDPIPES



LA LOIRE  
BASIN PILLAR TAP



LA LOIRE THREE HOLE  
BASIN TAP



LA LOIRE DECK  
MOUNTED BATH FILLER



LA LOIRE DECK MOUNTED  
BATH SHOWER MIXER



LA LOIRE BASIN  
MONOBLOC



LA LOIRE WALL MOUNTED  
THREE HOLE BASIN TAP



LA LOIRE WALL MOUNTED  
THREE HOLE BATH FILLER



LA LOIRE BATH  
SHOWER RISER

All taps fitted with quarter turn ceramic disc mechanism. Available in Silver Nickel (SN), Chrome Plate (CP) or Antique Gold (AG). Polished Brass is available on request for an addition charge.  
(see pg 83 for descriptions) Refer to Price Guide for complete listing of taps in this range.  
Feature Photograph - La Loire Taphead





# THE ENGLISH TAP



Following an original Edwardian design, these taps come with 'Hot & Cold' fired onto ivory crackle-glazed ceramic indices.



THE ENGLISH BATH SHOWER MIXER ON STANDPIPES



THE ENGLISH BATH PILLAR TAP



THE ENGLISH THREE HOLE BASIN TAP



THE ENGLISH DECK MOUNTED BATH FILLER



THE ENGLISH BASIN PILLAR TAP



THE ENGLISH BIDET MONOBLOC



THE ENGLISH WALL MOUNTED THREE HOLE BASIN TAP



THE ENGLISH WALL MOUNTED THREE HOLE BATH FILLER



THE ENGLISH DECK MOUNTED BATH SHOWER MIXER

All taps fitted with quarter turn ceramic disc mechanism. Available in Silver Nickel (SN), Chrome Plate (CP) or Antique Gold (AG). Polished Brass is available on request for an addition charge.  
(see pg 83 for descriptions) Refer to Price Guide for complete listing of taps in this range.  
Feature Photograph - The English Taphead





La Fontaine taps come with handmade ceramic levers which are fired in our own kiln, giving them an ivory crackle-glazed finish. In contrast, La Fontaine Noire have rich black levers.



LA FONTAINE  
BASIN PILLAR TAP



LA FONTAINE BATH  
PILLAR TAP



LA FONTAINE NOIRE  
THREE HOLE BASIN TAP



LA FONTAINE THREE  
HOLE BASIN TAP



LA FONTAINE DECK  
MOUNTED BATH FILLER



LA FONTAINE DECK MOUNTED  
BATH SHOWER MIXER



LA FONTAINE NOIRE WALL  
MOUNTED BATH FILLER



LA FONTAINE BIDET  
MONOBLOC



LA FONTAINE BASIN  
MONOBLOC



LA FONTAINE NOIRE WALL  
MOUNTED THREE HOLE BASIN TAP



LA FONTAINE WALL MOUNTED  
THREE HOLE BATH FILLER



LA FONTAINE WALL MOUNTED  
BATH FILLER

All taps fitted with quarter turn ceramic disc mechanism. Available in Silver Nickel (SN), Chrome Plate (CP) or Antique Gold (AG). Polished Brass is available on request for an addition charge.  
(see pg 83 for descriptions) Refer to Price Guide for complete listing of taps in this range.  
Feature Photograph - La Fontaine Taphead



## The Ultimate Showering Experience

Inspired by a 19th century French original, this amazing shower enclosure is made entirely from brass pipe work. Standing at over 8 feet in height, it completely envelopes the user in a cage of perforated piping that allows water to hit the body from all sides.

Unlike its predecessor, the 21st century version comes complete with quarter turn ceramic disc workings and a fully thermostatic mixing valve. True to the original it retains a 12 inch diameter shower rose and over 200 body jets, not forgetting a 'toe testing' tap at its base. This simple device allows one to select the optimum water temperature just by flicking open the lever.

*Available in Silver Nickel (SN) or Chrome Plate (CP).  
Polished Brass is available on request for an additional charge. (see pg 83 for descriptions)*

### DIMENSIONS

Maximum Height 2400mm

Diameter 1050mm



LA CAGE





# LE THERMO EXPOSED



Traditional in appearance, Le Thermo incorporates all the latest in modern showering technology. Fully thermostatic and easily operated, it comes with a wide range of combinations for filling your bath, rinsing your hair or simply showering.



LE THERMO TRIPLEX\*



LE THERMO BATH FILLER\*



LE THERMO



LE THERMO GRAND

## TAP HEAD OPTIONS

Le Thermo Triplex and Le Thermo Bath Filler both come with the following tap head options



La Fontaine



La Fontaine Noir



La Loire



The English

Available in Silver Nickel (SN), Chrome Plate (CP) or Antique Gold (AG). Polished Brass is available on request for an additional charge. (see pg 83 for descriptions)

\*Shower Hoop sold separately.

Feature Photograph - Le Thermo Exposed Shower Rose





# LE THERMO CONCEALED



Manufactured to the same specification as Le Thermo Exposed, this version has been adapted allowing the pipe work to be concealed. This minimal look will appeal to those who want a more contemporary feel, without compromising on the traditional fittings.



Shown here with La Fontaine\* Tap option

LE THERMO TRIPLEX\*



Shown here with La Loire\* Tap option





LE THERMO BATH FILLER\*



LE THERMO



LE THERMO GRAND

TAP HEAD OPTIONS				
Le Thermo Triplex and Le Thermo Bath Filler both come with the following tap head options				
				
La Fontaine	La Fontaine Noir	La Loire	The English	

Available in Silver Nickel (SN), Chrome Plate (CP) or Antique Gold (AG). Polished Brass is available on request for an additional charge. (see pg 83 for descriptions)  
 \*Shower Hoop sold separately.  
 Feature Photograph - Le Thermo Concealed with La Fontaine Tap Head



# SHOWER ENCLOSURES

*Shower:* A bath in which water is sprayed on the bather in fine streams from a showerhead, usually secured overhead. *[source: Middle English shour, from Old English scr]*





# SHOWER ENCLOSURES



As an essential component of most bathrooms, a shower enclosure should be functional and unobtrusive. All are simply finished in Silver with Clear Glass. Here is a selection of our most popular models.



CURVED QUADRANT SHOWER



BOW SHAPE QUADRANT SHOWER



THE DOUBLE SHOWER



THE D SHAPE SHOWER



THE WALK IN SHOWER



HINGED DOOR SHOWER

*Refer to Price Guide for complete listing of enclosures in this range.*

*Feature Photograph - Offset Quadrant Shower*





## TOILETS & CISTERNS

*Flushing:* Cleaning, rinsing or emptying with a rapid flow of a liquid, especially water. [source: Middle English *flussben*]



# HIGH LEVEL WC



Made from marine grade aluminium, our exclusive cisterns come finished in a variety of options.  
The high level ensemble will suit anyone trying to re-create a traditional look in their home and includes ornate brackets, lever, flush pipe, ceramic pull and all internal workings.



POLISHED DECORATED



PAINTED DELUGE



BURNISHED DECORATED



COPPER DELUGE



PAINTED DELUGE CISTERN WITH VICTORIA PAN



POLISHED DECORATED CISTERN WITH HIGH LEVEL THRONE



PAINTED DECORATED CISTERN WITH EMPRESS PAN

*Please note that flushpipe sizes are adjustable.*

*Feature Photograph - High Level Painted Deluge*





# LOW LEVEL WC



The low level ensemble has exposed pipe work and is very traditional in style. Ideal when space and height are at a premium, giving it an understated yet classic look. As well as cast metal, we also offer ceramic cisterns that match both our toilet pans. The Ensemble includes ornate brackets, ceramic lever, flush pipe and all internal workings.



POLISHED DELUGE



PAINTED DECORATED



BURNISHED DECORATED



COPPER DELUGE



PAINTED DELUGE WITH VICTORIA PAN



THE THUNDERBOX



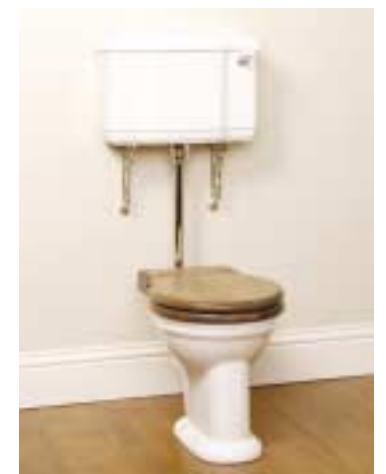
THE EMPRESS CISTERN AND PAN



POLISHED DECORATED CISTERN WITH EMPRESS PAN



THE THRONE



THE VICTORIA CISTERN AND PAN

Please note that flushpipe sizes are adjustable.

Feature Photograph - Low Level Painted Cistern with Lever



# TOILET SEATS



Our quality toilet seats are hand crafted from solid oak or mahogany in our joinery. Bespoke finishes are available on request. Hinges come in silver nickel, chrome or brass.



THE EMPRESS TOILET PAN



THE BOX SEAT MAHOGANY



THE BOX SEAT OAK



THE VICTORIA TOILET PAN



THE CLASSIC SEAT MAHOGANY



THE CLASSIC SEAT OAK



THE ROUND SEAT ON VICTORIA PAN



THE ROUND SEAT MAHOGANY



THE ROUND SEAT OAK



THE BOX SEAT ON VICTORIA PAN

Feature Photograph - The Empress Toilet with The Round Seat in Oak





# ANTIQUES

*Antique:* An object having special value because of its age, especially a domestic item or piece of furniture or handicraft esteemed for its artistry, beauty, or period of origin [source: French, from Latin *antiquus*]





# ANTIQUE SANITARY WARE

Our unique collection of Antiques still forms the foundations of what Catchpole & Rye has to offer today.

In fact, many of the baths we cast in our foundry are exact replicas of 19th century baths that we have collected over the years.

Since the beginning, we have developed a network of contacts throughout the UK and France, providing us with an unrivalled supply of antique baths and sanitary ware.

During the late eighteen hundreds Great Britain led the world in innovative plumbing techniques and the manufacture and design of sanitary ware. Many of the antiques we source today were originally made in England for the affluent Parisian market, hence the strong French influence seen across many of our pieces.

*The items shown in this section are typical of our ever changing stock. We always have a good selection of antiques at any one time and will endeavour to source similar or specific items if requested.*

*Feature Photograph - Doulton & Co, Paris 'Simplicitas'*



JACOB DELAFON LAVABO



PORCHER LAVABO



# ANTIQUE SANITARY WARE



THE EXCELSIOR



THE ART NOUVEAU LAVABO



THE WATERFALL CLOSET BLUE



THE RICARDIA



THE WATERFALL CLOSET FLORAL

Feature Photograph - The Waterfall Floral and Blue (Bottom) and The Ricardia (Top)



# TILES & FLOORING

*Flooring:* The building material used in laying the surface of a room on which one stands. *[source: Middle English flor; from Old English flr.]*





# TUMBLLED MARBLE



Sourced from the highest grade of Italian marble, these tiles and mosaics are available in a wide spectrum of colours.



*Refer to Price Guide for more information.*

*Feature Photograph - Tumbled Marble in Sand, Saracen Bath with Burnished Exterior*





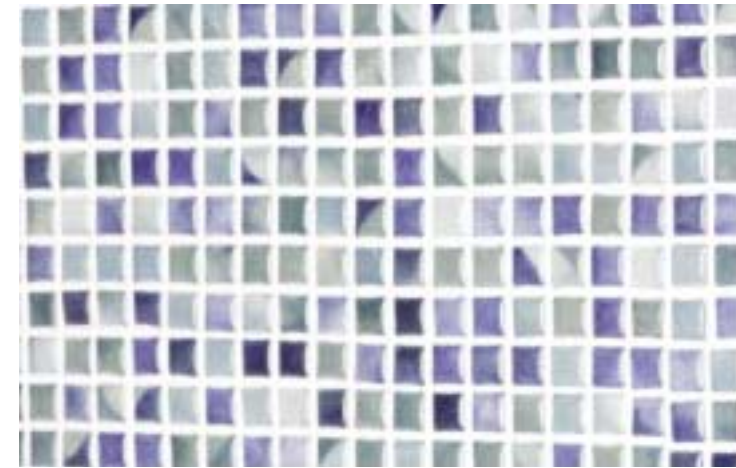
# GLASS MOSAICS



These bright and colourful glass mosaics are especially suitable for shower enclosures and children's bathrooms.



BANYAN



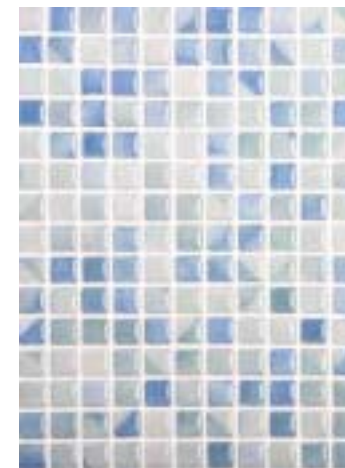
PAGODA



SPRUCE



CAMPHOR



PAPAYA



CEDAR



OLIVE

*Refer to Price Guide for more information.*

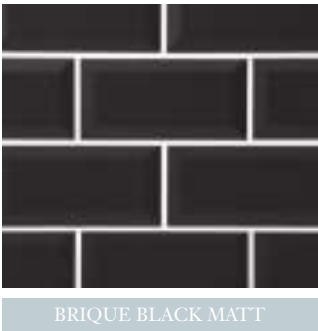
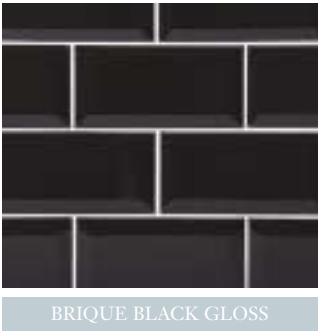
*Feature Photograph - Glass Mosaics in Pagoda, Le Bain de Bateau with a Painted Exterior*



# BRIQUE TILES



These brick shaped tiles have a bevelled edge and come in a gloss or matt finish.



Refer to Price Guide for more information.

# PORCELAIN TILES



These durable tiles have a rectified edge to imitate the cut of natural stone. Their subtle sandy tones makes them suitable for both floor and wall application.



Refer to price guide for a full listing of sizes.

# NATURAL STONE



A finish that only nature can achieve. From the ragged look of slate to the fossilised shine of limestone, this hardwearing flooring will stand the test of time.



CHARCOAL SLATE FLOORING



POLISHED LIMESTONE FLOORING



EMERALD SLATE FLOORING

*Refer to price guide for a full listing of sizes.*

# ANTIQUE FLOORING



Made from extracted natural clays, with shades varying from light creamy yellows, to strong rich burgundy reds. Our antique flooring is durable and easily maintained when treated with modern resin based liquid sealer and water based polish.



HEXAGONAL TERRACOTTA FLOORING



ANTIQUE BRIQUETTE FLOORING

*Refer to price guide for a full listing of sizes.*



# TIMBER FLOORING



All our timber flooring comes directly from France. These wide, kiln-dried tongue and groove boards are the most traditional and authentic type of flooring available. The timber is provided in its natural state for onsite staining, sealing or polishing.



FRENCH CHESTNUT



FRENCH MEDIUM OAK



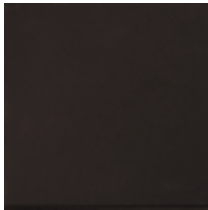
FRENCH DARK OAK

Refer to Price Guide for more information.

# GEOMETRIC



A Victorian house would not be complete without these unglazed geometric tiles. Traditionally placed in hallways, cloakrooms or bathrooms, they reflect the colourful flavour of this era.



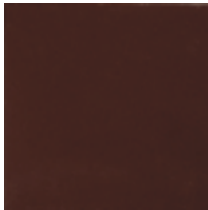
BLACK



PALE BLUE



WHITE



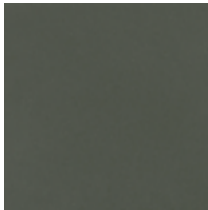
BROWN



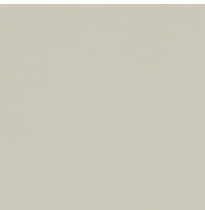
PARME



IVORY



DARK GREEN



PEARL GREY



BLUE



GREY



RED



PALE GREEN



GEOMETRIC BLACK AND WHITE

Refer to Price Guide for more information.



# ACCESSORIES HOOPS & RAILS FITTINGS

*Accessories:* Something non essential but desirable that contributes to an effect or result. *[source: Middle English accessorie, from Medieval Latin accessarius from accessus, helper, from Latin accessus approach]*





# ACCESSORIES



Accessories are an important part of any bathroom. We offer a selection of high quality accessories to compliment our sanitary ware in a variety of finishes.



EMPIRE CHINA SOAP DISH



EMPIRE WIRE SOAP BASKET



EMPIRE CHINA CUP & HOLDER



EMPIRE TOOTHBRUSH HOLDER



EMPIRE TOILET BRUSH & HOLDER



EMPIRE GALLERY SHELF



EMPIRE CERAMIC CHAIN PULL

Feature Photograph - Empire Over Bath Rack



EMPIRE WIRE SHOWER TIDY



EMPIRE WIRE CORNER BASKET



EMPIRE PAPER HOLDER

# ACCESSORIES



EMPIRE ROBE HOOK\*



EMPIRE TOWEL RING



EMPIRE TOWEL RAIL\*



EMPIRE EXTENDABLE SHAVING MIRROR



EMPIRE CAST METAL MIRROR POLISHED\*\*

*\*Available as single or double. \*\*Mirrors also come in a painted finish of your choice.*





# HOOPS & RAILS



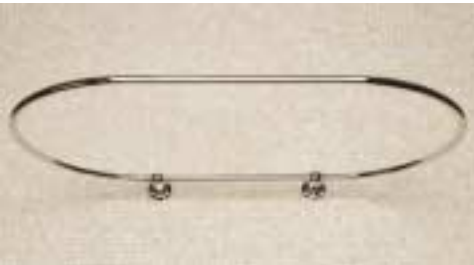
These traditional tubular shower rails and towel radiators are made from solid brass. Standard sizes shown, but these can be made to your own specification.



OVAL CEILING MOUNTED SHOWER RAIL  
 Width 760mm Length 1500mm



CLOAKROOM HEATED TOWEL RADIATOR  
 Width 495mm Height 960mm



OVAL WALL MOUNTED SHOWER RAIL  
 Width 760mm Length 1500mm



HEATED TOWEL RAIL WITH VALVES  
 Width 675mm Height 960mm



ROUND WALL MOUNTED SHOWER RAIL  
 Diameter 850mm



HEATED TOWEL RADIATOR WITH VALVES  
 Width 675mm Height 960mm

Available in Silver Nickel (SN), Chrome Plate (CP) or Antique Gold (AG). Polished Brass is available on certain items.  
 Feature Photograph - Ladder Towel Rail - Width 675mm Height 1630mm



BUTLER SINK WASTE, PLUG & CHAIN



SHOWER WASTE



CAPTIVE WASTE



BASIN WASTE, PLUG & CHAIN



ORNATE BASIN / CISTERN BARCKETS



EXPOSED BATH TRAP & OUTLET PIPE



BASIN BOTTLE TRAP

# FITTINGS



All our fittings are made from solid brass and to British Standard sizes.



HIGH LEVEL FLUSH PIPE ASSEMBLY



LOW LEVEL  
FLUSH PIPE



EXPOSED BATH WASTE  
& OVERFLOW



LOW LEVEL CERAMIC CISTERN LEVER



RADIATOR VALVES





# KITCHEN SINKS & FITTINGS

*Kitchen:* a room or place equipped for cooking.

*[source: Middle English kichen, from Old English cycen]*



# KITCHEN SINKS & FITTINGS



All our Kitchen sinks are made from quality fireclay and are available in various sizes. Kitchen taps come with different tap head or lever options and are finished in silver nickel, chrome, antique gold or polished brass.



LA LOIRE KITCHEN MIXER TAPS



THE ENGLISH KITCHEN MIXER TAPS



FRENCH DOUBLE FARMHOUSE SINK



LA LOIRE BIB TAPS ON RISERS



LA FONTAINE NOIR KITCHEN MIXER TAPS



BELFAST SINK

*Refer to Price Guide for a full listing of taps in this range.*

*Feature Photograph - La Fontaine Kitchen Mixer Taps*



# PRODUCT INFORMATION

## Baths and Cisterns

Almost all our baths and cisterns are cast to order and hand finished in our own workshops. Depending on the finish you have chosen, we can email or send you images of the work in progress. You also have the option to have your bath or cistern personalised and cast with a special date, name or place!

## Painted Exterior

Painting the exterior of your bath or cistern in a colour of your choice can help compliment an overall design scheme. We generally recommend paint from the Farrow & Ball range, but can match any proprietary colour required.

## Burnished Exterior

The Burnished finish has the rawness of bare metal that can only be appreciated if you see one in the flesh. During the process we can send you pictures of how the bath or cistern is progressing. Like a fingerprint, no one piece will ever be the same, ensuring a truly bespoke item. All Burnished Baths are sealed with a clear lacquer.

## Polished Exterior

Our most requested finish of all; it takes up to a week of hard work to polish and buff the exterior of a cast iron bath to give it this amazing silver mirror-like finish. The end result is truly spectacular and definitely the focal point in any bathroom. All Polished Baths are sealed with a clear lacquer.

## Cast Irons Baths

The approximate weight for one of our baths ranges between 150 kilos to 200 kilos. The loading on the floor should be calculated as approximately three times the weight of the bath itself (taking into account the water and an occupant). It is imperative that the floor is capable of supporting this weight. If you have any doubt, please consult a qualified professional before installing the bath. It requires 3 - 4 strong men to move a cast iron bath.

## Finishes

Our taps, accessories and fittings are all made from 100% solid brass. They have been individually hand polished, assembled and then plated in Silver Nickel, Chromium or Antique Gold. Polished Brass and Polished Copper are also available on certain fittings.

**Silver Nickel** – The most authentic finish available, silver nickel has a hue of silver and is much warmer in colour than chrome. A very classy finish!

**Chromium Plate** – Used extensively in today’s modern fittings, this highly polished finish has a tinge of blue.

**Antique Gold** – Plated in real 23-carat gold and mixed with nickel and other traces of metals, this finish resembles brass, but does not tarnish. Instead it has a soft, pale golden colour with a hue of nickel and is easily maintained.

**Polished Brass** – Traditional brass which has been buffed and polished to give a very high sheen. Brass will tarnish over time, so a reasonable amount of cleaning is necessary to keep it looking like new.

**Polished Copper** – This highly polished finish will tarnish quickly if left exposed to give an antique leathery look. Copper plating can also be sealed with a clear lacquer to maintain a permanent shiny finish.

## Looking after your taps

Where a build up of limescale can occur in hard water areas we recommend the fitting of a water softening device. We also recommend that all surfaces should be wiped dry after use. Only a mild non-abrasive cleaning product should be followed by rinsing and drying with a soft cloth. Beeswax is a good water repellent which will help delay water marks and limescale build up.

## Care and Cleaning

To achieve long lasting wear and appearance on your sanitary ware, we recommend you do not use scouring agents, abrasive sponges, hydrochloric acid, vinegar (acetic acid) cleaners, ammonia or metal silicates.

## Shower Roses and Handsets

These items should be cleaned and descaled on a regular basis to prevent build up of limescale which can cause blockages.

## Overflows, Wastes and Taps

These are sold as separate items when purchasing either a bath or basin, unless otherwise stated.

## Installation

All our baths, showers and sanitary ware should be fitted by a qualified plumber. If you or your installer have any queries regarding technical information, we are happy to give our advice and assistance on 01233 840457. Technical information is also available online at [www.crye.co.uk](http://www.crye.co.uk).

## Pumped Supply

Please ensure there is adequate pressure to operate the products you have selected. A pump may be required in certain instances to improve performance.

## UK Delivery

Catchpole & Rye offer a nationwide delivery service and operate a scale of modest charges. Alternatively, stock can be collected from our warehouse in Kent. All orders are double checked, wrapped in appropriate packaging and dispatched in good condition. Once you have checked your order, please sign the delivery docket. Replacements for damaged or incorrect items can only be undertaken if reported within 3 days of delivery.

Whilst every effort is made to ensure satisfactory delivery of customer orders, we cannot accept liability for any damage caused to property in pursuance of specific requests for goods to be unloaded. Equally, we do not accept responsibility for lost working time in the unlikely event of a delivery being incorrect, delayed or postponed.

## Worldwide Sales and Delivery

Catchpole and Rye can arrange worldwide delivery. Details of charges will be confirmed in advance. For customers outside the UK, please call us on 00 44 1233 840840 or email [sales@crye.co.uk](mailto:sales@crye.co.uk). Fax 00 44 1233 840444.

## Sales

Orders may be placed by phone, email, online at [www.crye.co.uk](http://www.crye.co.uk) or simply in person at our showrooms. Lead times for baths can be 6-8 weeks depending on the finish required.

## Payment

We accept all major credit and debit cards. Payments can be made by telephone or by cheque. Please make cheques payable to Catchpole & Rye and send to: Catchpole and Rye, Saracens Dairy, Jobbs Lane, Pluckley, Kent. TN27 0SA.

## Data Protection

We would like to keep your personal information on file so that we can keep you informed about Catchpole & Rye. These details will not be passed on to any other company. If you do not wish to receive our information, please call us on 01233 840840 or write to us at: Catchpole & Rye, Saracens Dairy, Jobbs Lane, Pluckley, Kent. TN27 0SA.

Our brochure has been produced entirely in house and we hope it has captured the quality of our sanitary ware and the passion we have for our product. The information contained within it is to the best of our knowledge, accurate at the time of going to press. We do however reserve the right to introduce changes and modifications required over the course of time.

## Acknowledgements

We would like to say a special thank you to Alan Duncan for the many wonderful photographs throughout this brochure and to Jessica Wenham, John Campell and Rita Rendo Castro for all their hard work on design and production.

All product design, logos and content within this brochure are the copyright of Catchpole & Rye. We reserve the right to take legal action against any breach of copyright laws. Images may not be reproduced without express written permission.