

Telegrams, " CRAPPER, CHELSEA."

Telephone No. (01789) 450 522.

THOMAS CRAPPER & CO. LTD.,

PATENTEES AND MANUFACTURERS

. . . OF . . .

Sanitary Appliances.

ENGINEERS BY APPOINTMENT TO

Their Late Majesties

King Edward VII AND King George V.



OFFICES AND STORES :

THE STABLE YARD, ALSCOT PARK, STRATFORD-ON-AVON, WARWICKSHIRE.

(CV37 8BL)

ESTABLISHED 1861.

INCORPORATED AS A LIMITED COMPANY (Nº 82482) IN 1904.

PRODUCERS OF THE WORLD'S MOST AUTHENTIC PERIOD-STYLE SANITARYWARE.

LATE OF THE BOROUGH OF CHELSEA;

NOW IN THE IMMORTAL BARD'S BOROUGH OF STRATFORD-ON-AVON, WARWICKSHIRE.

All goods marked with the CRAPPER name are **exclusive** to T.C. & Co; we NEVER simply re-label another company's products.



MEMBER
of the
INSTITUTE of PLUMBING.



'British Made for Quality' is a campaign to promote goods that are *genuinely* British made.
01372 749556 or www.BMFQ.co.uk



SALVO
FOUNDER
MEMBER

The 'Salvo Code' is a voluntary code of practice for dealers in architectural antiques or reclamation. Members undertake to avoid stolen goods and items removed, without consent, from listed buildings.
0208 400 6222 or www.salvoweb.com

All Crapper products are HAND MADE, therefore each piece contains slight surface variations which one should expect with hand production.

Colours shown in this catalogue are as accurate as possible. Illustrations and specifications provided are not binding in detail. The right is reserved to alter designs and dimensions.

COPYRIGHT - THOMAS CRAPPER & CO. LTD., 2007.

Thos. Crapper & Co. wish to record their gratitude to the following extra-ordinary companies:

Messrs. Peter Atkinson Design (01926 411 224)

Messrs. Bullock Partners Photography (07836 510 082)

—→ *AND* ←—

Messrs. Merry Printers Ltd. (01582 726 959).

In addition, we are indebted to:

The National Museum of Science and Industry

for some of the period T.C. & Co. engravings within.

~ An example of our famous '814' cistern is on display at the Science Museum, London ~



'THOMAS CRAPPER' AND 'CRAPPER' ARE TRADE MARKS.





Sanitary Engineers

By Warrant of Appointment to

**Their Late Majesties Edward VII and George V
Both as Princes of Wales and Kings.**



MR. THOMAS CRAPPER.



MR. ROBERT M. WHARAM.



MR. GEORGE CRAPPER.

(Late of Marlboro' Works, Marlborough Road,
= = = Chelsea, London, S.W.)

A BRIEF HISTORY OF THE COMPANY.



Thomas Crapper and some of his employees outside Marlboro' Works, Chelsea, circa 1892.

Thomas Crapper was born in Yorkshire in 1836, into a family of modest means. At 14 years of age he was apprenticed to a Master Plumber in London, then in 1861 he set up in his own right in Robert Street, Chelsea. Five years later he moved to larger premises: the Marlboro' Works. He established a reputation for singular quality and service; the company expanded and by 1907 it had a flagship store on the King's Road, opposite Royal Avenue (see page 26).

It is not true that Mr. Crapper invented the W.C. or that the vulgar word for faeces is a derivative of his name. However, etymologists attest that the word "crapper", meaning the W.C., is directly from his name. He relentlessly promoted sanitary fittings to a sceptical world and championed the 'water-waste-preventing cistern syphon'. He invented the bathroom showroom at the Marlboro' Works and displayed his W.C.s in plate-glass windows. This caused quite a stir and ladies fainted in the street with shock!

Mr. Crapper held several patents, for example the 'Disconnecting Trap' which became an essential drains fitting and a leap forward in public health. Another was for a **SPRING-LOADED** seat, which leapt up as the incumbent got to his feet, simultaneously operating rods and pulleys which flushed the cistern. Unfortunately the rubber buffers under the seat became tacky over time; this made the seat momentarily stick to the bowl as the user arose. The tension in the powerful springs would cause the seat to break free, and shooting upwards it would strike the hapless Victorian on the bare buttocks! It was not a financial success, and it became known as the '**BOTTOM SLAPPER**'!

Despite this commercial hiccup, by the 1880s Crapper & Co.'s reputation was such that they were invited to supply sanitaryware to Sandringham for the Prince of Wales. Windsor Castle, Buckingham Palace and Westminster Abbey all benefited from Crapper products. To-day, the Crapper manhole covers in the Abbey are popular with visitors for wax-rubbings. The firm remained By Royal Appointment when the prince became King Edward VII and was also warranted by George V, as Prince of Wales and once again as king.

Thomas Crapper died in 1910 and was buried near the grave of the famous cricketer, W.G. Grace, in Elmer's End Cemetery. Mr. Crapper's partner, Robert Wharam, and their respective descendants ran the company until 1963 when there were no suitable Crappers or Wharams left. The business was sold to a former rival and fallow years followed – **BUT IT SURVIVED** – and it is independent once again. Having held four royal warrants and existed through five reigns over 145 years, Thomas Crapper & Co. is again manufacturing the finest bathroom fittings.

INTRODUCTION.



*Our 25 inch washbasin on nickel-plated stand, low-level W.C. with china cistern and 'Hertford' bath & fittings.
(See separate sheet for bath details).*

Thomas Crapper & Co. are proud to present what might be termed our 'new' range of 'old' bathroom fittings. After more than eight years of intensive (and expensive) development and research, we offer a small yet **extraordinarily** authentic set of Victorian/Edwardian sanitaryware.

It would have been so easy to surrender to the demands of current production methods and the desire to reduce costs, but we remained obstinate in our insistence upon historical accuracy.

Of course, modern methods and materials have been used where deemed appropriate, but only where they do not compromise the integrity of any piece. We view technology as our occasional slave, not our constant master.

There have been **no changes of design for economy or ease of production**. Such very small alterations that have been made are solely to allow connection to modern plumbing. Frankly, we small band of enthusiasts, who had the privilege of acquiring this grand old firm, would not be inclined to rise each morning only to manufacture *ordinary* reproductions!

ALL SANITARYWARE MARKED 'CRAPPER' IS MADE IN GREAT BRITAIN.

Our refusal to compromise inevitably raises manufacturing challenges. Occasionally processes go awry, but we do not sell cheaper 'seconds'. If a product fails to meet our standards, it is destroyed.

It will be obvious that this insistence upon authenticity and quality increases the cost of production. However if we may quote Sir Henry Royce, a contemporary of Thomas Crapper:

"The quality remains long after the price is forgotten."

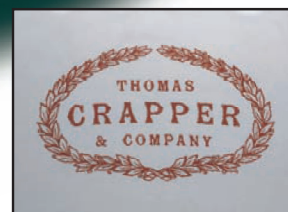
We respectfully commend these fittings to you as the finest of their kind.

Lavatory Basin.

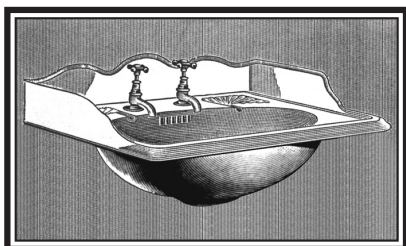


Our 22 inch Basin,
No. 838

~ ALSO AVAILABLE IN 'ANTIQUE-WHITE'~



CLOSE-UP OF TRANSFER.



FROM ONE OF OUR 1890S CATALOGUES.

THE FOLLOWING ARE BRIEFLY SOME OF THE NUMEROUS FEATURES OF EXCEPTIONAL MERIT

TO WHICH CONSIDERATION IS RESPECTFULLY DIRECTED.

AUTHENTICITY - In style and detail, this Basin is **exactly** the same as a Victorian original.

QUALITY - This Wash-hand Basin is hand-cast and hand-finished using the best Vitreous China clay and glazes. Great attention is paid to the soap-dishes and mouldings, as it is particularly difficult to achieve the definition of the Victorian originals when using modern Vitreous clays. (Vitreous China is now employed because it is impermeable, unlike the clays used by the Victorians which often crazed and subsequently leaked).

The finely detailed transfers are fired properly into the glaze, so are smooth to the touch as were the originals.

Also available with three tap holes, to suit our Basin Mixer Set (page 12).



BRITISH MADE.

Large Lavatory Basin.



~ ALSO AVAILABLE IN
'ANTIQUE-WHITE'~

No. 838L

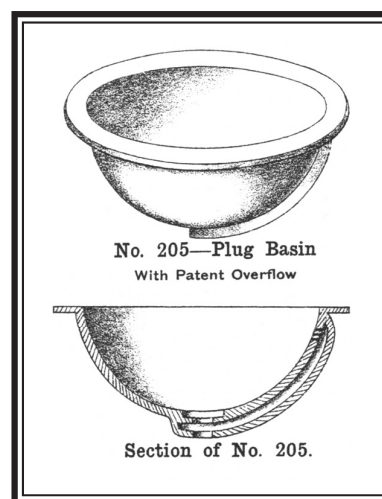
Hand-cast and finished to the same exacting standards as our 22 inch basin but measuring 25" x 19¹/₂". It is also available with three tap holes, to suit our Basin Mixer Set (page 12).

Round Plug Basin.



~ ALSO AVAILABLE IN
'ANTIQUE-WHITE'~

No. 205



No. 205—Plug Basin
With Patent Overflow

Section of No. 205.

ENGRAVINGS FROM OUR
1883 CATALOGUE.

The Plug Basin is made for mounting under a flat surface (for example, marble, wood, tiles, stone &c.). Again, cast by hand with the usual Crapper & Co. fastidiousness.
14 inch internal diameter.

A three-hole Basin Mixer Set is available to mount beside this bowl (page 12).



BRITISH MADE.

Cloakroom Basin.



No. 861

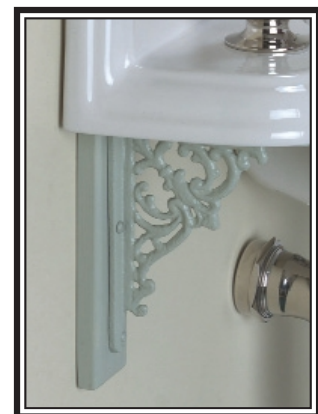
~ ALSO AVAILABLE IN
'ANTIQUE-WHITE'~

So many cloakroom basins are ugly and too big!

This attractive and tiny washbasin is a copy of an original which was designed for small rooms. It measures only 20" x 10" but the bowl is big enough to comfortably wash one's hands.

Hand-cast and finished to the usual Crapper & Co. standards.

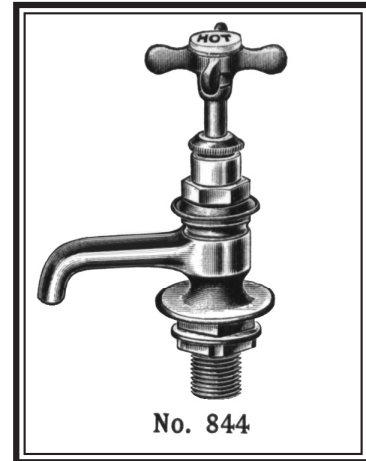
Requires small brackets No. 736 (5" x 4") and patrases which can be painted **ANY COLOUR**.



CLOSE - UP OF BRACKET,
No. 736.



Lavatory Fittings. (1)



AN ENGRAVING OF A BASIN TAP
FROM ONE OF OUR 1890S CATALOGUES.

No. 844
Showing Nickel Plate Finish.

THE FOLLOWING ARE BRIEFLY SOME OF THE NUMEROUS
FEATURES OF EXCEPTIONAL MERIT
TO WHICH CONSIDERATION IS RESPECTFULLY DIRECTED.

AUTHENTICITY - In style and detail these taps are **exactly**
the same as our Victorian originals.

QUALITY - Hand-cast in solid brass, hand-finished and
pressure tested.

PRACTICALITY - Every pair is supplied with special
Non-Return Valves in order to comply with British
Water Regulations.



Available in Polished Brass, Nickel Plate or Chromium Plate.



BRITISH MADE.

Lavatory Fittings. (2)

WASTES.

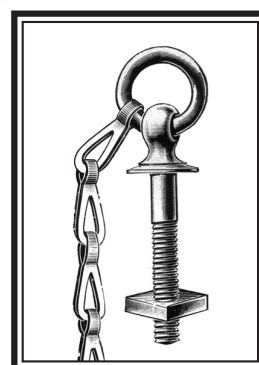


No. 823

Showing Polished Brass Finish.

Our Wash-hand Basin Waste, Chain, Stay & Plug; they are accurate re-manufactures of original Victorian examples from our private collection.

The Stay is **exactly** the correct shape; the 'chandelier' chain is as supplied in the past and the 'X' shaped 'ring-catcher' in the Waste is a Victorian pattern, as opposed to the modern 'spider's web' or 'swirl' shapes.



AN ORIGINAL 1890S
ENGRAVING SHOWING HOW A
CHAIN-STAY SHOULD APPEAR.

TRAPS.



No. 722P ('P' Trap).

Nineteenth-century traps were generally made of lead. As that is unacceptable today, we offer the traditional alternative of a copper and brass trap.

Plastic traps should never be seen. Ordinary, modern polished-metal traps are unfortunate in appearance and not recommended for Crapper basins.



No. 722S ('S' Trap).



Available in Polished Brass, Nickel Plate or Chromium Plate.

Lavatory Fittings. (3)

WASHBASIN STANDS.

No. 130

Available to suit our
22 inch and 25 inch
washbasins.



The 'feet' are
threaded **secretly**
to allow adjustment
for uneven floors
($\frac{1}{2}$ inch overall).



This 'pip' is inserted
into a small hole
drilled in the floor,
for extra rigidity.

An exact replica of an antique in our
own collection. Constructed of heavy,
solid brass fittings and thick-wall
brass tube.

Authentic, under-stated and elegant.

Showing Nickel-Plated
Stand with our 25 inch
washbasin.



Showing Polished
Brass Stand with our
22 inch washbasin.

Available in Polished Brass, Nickel Plate or Chromium Plate.



Lavatory Fittings. (4)

WASHBASIN MIXER SET.



So many Basin Mixers are unfortunate in appearance.

Therefore we have created a period-style set of handsome looks. Above all, each component is in proportion with every other. We have not taken the common route of using a spout design from a much later era.

Supplied with Non-Return Valves in order to comply with British Water Regulations. (Attached to the supply pipes and hidden, for example, under the floor).



Showing Mixer Set on our
22 inch Washbasin.



Showing Mixer Set on our
25 inch Washbasin.



Showing Mixer Set with our
14 inch Round Plug Washbasin.



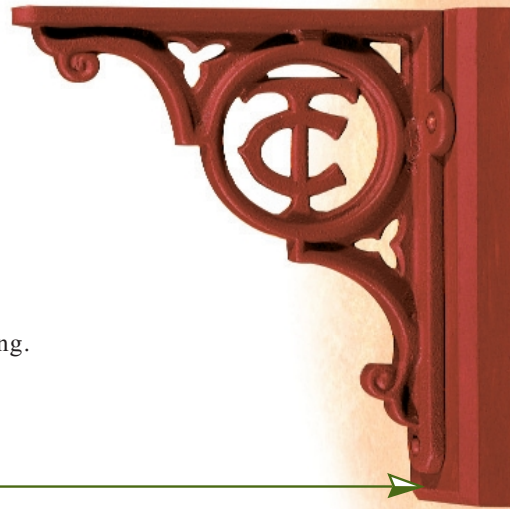
Available in Polished Brass, Nickel Plate or Chromium Plate.

Ornamental Brackets for Wash - hand Basins, W.C. Seats and Cisterns.

Cistern Brackets, No.754.

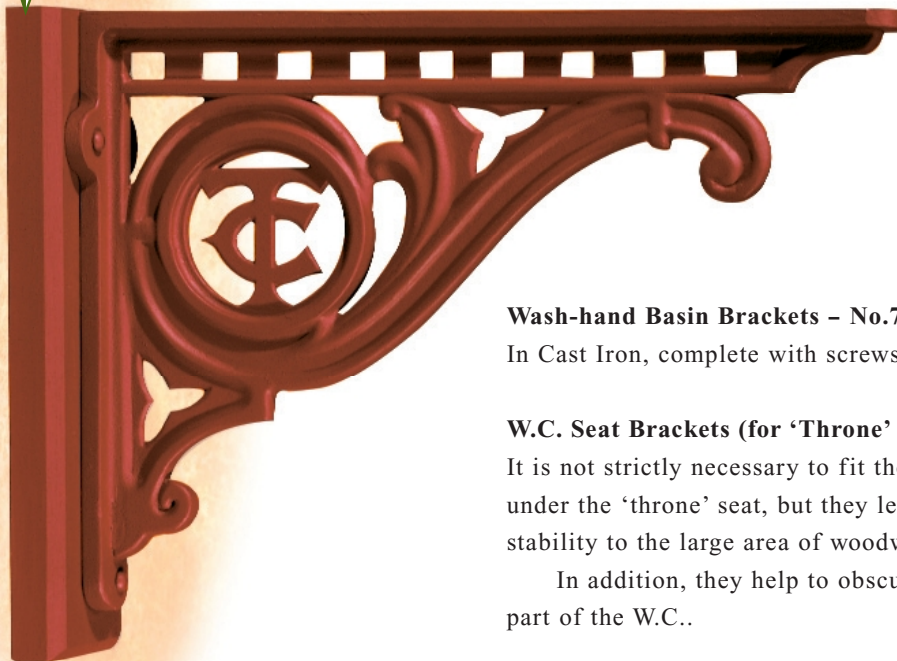
In Cast Iron, complete with screws and the all-important wooden 'patrases' that make the fixing more secure and give a more "finished" appearance.

Supplied in bare iron and wood, for painting.



Wooden Patrases

THEY CAN BE PAINTED ANY COLOUR.



Wash-hand Basin Brackets - No.791.

In Cast Iron, complete with screws and 'patrases.'

W.C. Seat Brackets (for 'Throne' seat) - No.793.

It is not strictly necessary to fit these brackets under the 'throne' seat, but they lend more stability to the large area of woodwork.

In addition, they help to obscure the outlet part of the W.C..

Supplied in bare iron and wood, for painting.



BRITISH MADE.

Valveless Water Waste Preventer.

(These days usually referred to as a "Cistern").



SUPPLIED PRIMED -
CAN BE PAINTED
ANY COLOUR.

No. 814



THE FOLLOWING ARE BRIEFLY SOME OF THE NUMEROUS FEATURES OF EXCEPTIONAL MERIT

TO WHICH CONSIDERATION IS RESPECTFULLY DIRECTED.

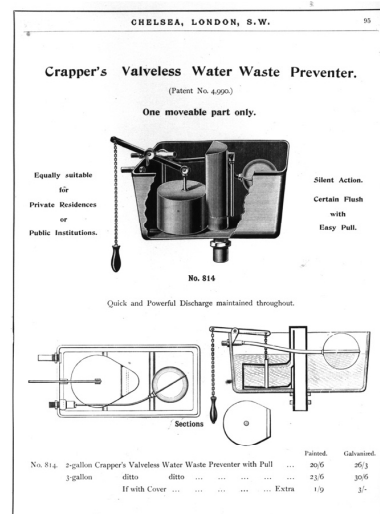
AUTHENTICITY - In style and detail this Cistern is **exactly** the same as our Victorian original.

QUALITY - Originally made from Cast Iron, which is strong but liable to rusting, this Cistern is made from Marine Quality Aluminium. This is considerably **MORE EXPENSIVE THAN IRON**, but this special alloy resists corrosion and gives a smoother finish.

The tail thread of the syphon is solid brass and the pipe nuts are supplied in Brass, Nickel or Chromium to match the flush-pipe. **We do not offer the usual cheap metal 'cup' to cover the (even cheaper) plastic nuts!**

PRACTICALITY - The internal fittings are efficient modern versions of the originals and are the finest available. The cistern conforms to current British Water Regulations in that it delivers just over one gallon.

ADAPTABILITY - The lever can be mounted on the left or right. The Syphon can be altered to deliver a full two gallons where needed, that is, when used with an older W.C. that requires more water.



A PAGE DESCRIBING THIS CISTERN
FROM ONE OF OUR
1890S CATALOGUES.



A PROPER SYPHON IS SUPPLIED -
NEVER A "FLUSHING VALVE."

Low-Level Cistern.



SUPPLIED PRIMED -
CAN BE PAINTED
ANY COLOUR.

No. 814 (L)



THE FOLLOWING ARE BRIEFLY SOME OF THE NUMEROUS FEATURES OF EXCEPTIONAL MERIT

TO WHICH CONSIDERATION IS RESPECTFULLY DIRECTED.

AUTHENTICITY - The very best of the Edwardian low-level cisterns sported this type of “beer-engine” handle, so we are proud to re-introduce this pattern.

QUALITY - Constructed and finished in the same way as our high level cistern but fitted with a china-handled lever. Available with Brass, Nickel-Plate or Chromium-Plate fittings.

We recommend that it is used in conjunction with our brackets and patrases, large-bore low-level flushpipe, and oval wooden seat (see illustration, left).

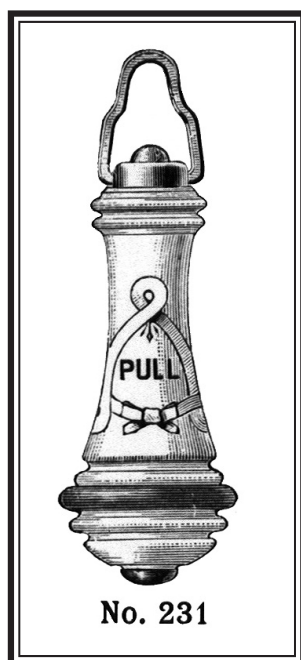
A PROPER SYPHON IS SUPPLIED - NEVER A “FLUSHING VALVE.”



Cistern Pull.

The shape and details of original Victorian Cistern Pulls are especially difficult to reproduce, so we are particularly proud of our product.

Supplied with the correct type of 'chandelier' chain.



No. 231

AN ENGRAVING OF A CISTERN PULL
FROM ONE OF OUR 1890s CATALOGUES.



Metal Parts available in Polished Brass,
Nickel Plate or Chromium Plate.



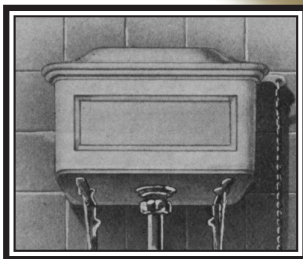
No. 231

We could not resist adding our company name to the finely-detailed and accurate transfer. We also inserted 'AND LET GO' as some of the earliest and rarest china pulls in our private collection are so inscribed!

China High-Level Cistern.



No. 152



FROM ONE OF OUR
1890s CATALOGUES.

THE FOLLOWING ARE BRIEFLY SOME OF THE NUMEROUS FEATURES OF EXCEPTIONAL MERIT

TO WHICH CONSIDERATION IS RESPECTFULLY DIRECTED.

AUTHENTICITY - This is an **exact** replica of an original china cistern made over 100 years ago.

QUALITY - It is cast in Vitreous China, which does not craze and become prone to leaking, as did the Earthenware of yore. The tail thread of the syphon is solid brass and the pipe nuts are supplied in Brass, Nickel or Chromium to match the flush-pipe. **We do not offer the usual cheap metal ‘cup’ to cover (even cheaper) plastic nuts!**

PRACTICALITY - The internal fittings are efficient modern versions of the originals and are the finest available. The cistern conforms to current British Water Regulations in that it delivers just over one gallon.

ADAPTABILITY - The lever is normally mounted on the right-hand side, but left-handed cisterns can be made to order, at no extra cost. The syphon can deliver a full two-gallon flush where needed, that is, when used with an older W.C. that requires more water.



A PROPER SYPHON IS SUPPLIED - NEVER A “FLUSHING VALVE.”



China Low-Level Cistern.



No. 397



CLOSE -UP OF HANDLE
- AN AUTHENTIC COPY
OF AN ORIGINAL FROM OUR
PRIVATE COLLECTION.

THE FOLLOWING ARE BRIEFLY SOME OF THE NUMEROUS FEATURES OF EXCEPTIONAL MERIT

TO WHICH CONSIDERATION IS RESPECTFULLY DIRECTED.

Due to demand, we have produced a CHINA version of our low-level cast metal cistern.

Not an exact replica; our originals of 100 years ago were of huge dimensions due to the technological limitations of the time. This new cistern has many authentic details but it is now in proportion to the other fittings.

As with the cast-metal '814', the syphon within is of the very highest quality and is supplied with a brass thread and polished nuts.

The cistern conforms to British Water Regulations in that it delivers just over one gallon. It is hand-cast in non-crazing Vitreous China. The handle is normally mounted on the right-hand side, but left-handed cisterns can be made to order, at no extra cost. The syphon can be altered to deliver a full two-gallon flush where needed, that is, when used with an older W.C. pan that requires more water.



A PROPER SYPHON IS SUPPLIED - NEVER A "FLUSHING VALVE."

Pedestal Wash-down Closet. "The Venerable."



~ ALSO AVAILABLE IN
'ANTIQUE-WHITE'~

No. 180

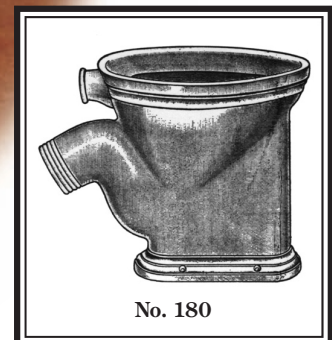
THE FOLLOWING ARE BRIEFLY SOME OF THE NUMEROUS FEATURES OF EXCEPTIONAL MERIT

TO WHICH CONSIDERATION IS RESPECTFULLY DIRECTED.

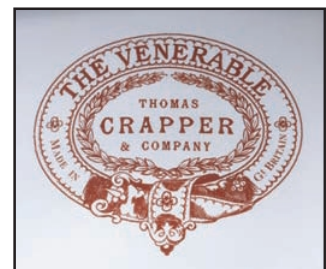
AUTHENTICITY - In style and detail this W.C. is **exactly** the same as a Victorian original, but it is fitted with an 'Horizontal Outlet' to suit modern plumbing practice.

QUALITY - This W.C. is hand-cast and hand-finished using the best Vitreous China clay and glazes. Great attention is paid to the mouldings, as it is particularly difficult to achieve the definition typical of the Victorian originals when using modern Vitreous clays. (Vitreous China is now employed because it is impermeable, unlike the clays used by the Victorians which often crazed and subsequently leaked).

TRANSFERS - We are proud to re-introduce the Victorian practice of giving each model of W.C. a name, hence 'The Venerable.' Sometimes the name was displayed on the front of the rim. This we have also revived. Our transfers are authentically detailed and are fired into the glaze, so are smooth to the touch, as in the past.



FROM ONE OF OUR 1890s
CATALOGUES.



High-Level Flushpipe and Clips.

No. 717



Made of solid brass and available in Polished Brass, Nickel Plate or Chromium Plate, our flushpipes are at least 1½ times thicker than most pipes on the market.

Unusually (these days) but correctly, each pipe is supplied with TWO clips, one for retaining the pipe to the wall, the other also housing a rubber buffer to protect the seat lid when raised. They are exact copies of top quality Victorian originals.



Low-Level Flushpipe

No. 358

These pipes are for use with our Low-Level Cisterns and are made from thick-wall tube.



Available in Polished Brass, Nickel Plate or Chromium Plate.

Three-part Flushpipe.



No. 1662S

A window above the W.C. presented a common problem in the past. How could one install a high-level cistern? The solution was a 'side-wall' or 'three-part' flushpipe. Our Three-part Flushpipe is made from the same thick-wall tube as used for our other flushpipes. A cast brass 'Crapper' pipe clip is supplied to retain the pipe to the wall.

The pipes are made longer than necessary, so they can be trimmed to suit the room.

The cistern can be mounted on a side wall, at 90° to the pan (as above), *or on the same wall as the pan*, but to the right or left of the window.



‘Throne’ Wooden Seats for W.C.s.



No. 214

Showing OAK ‘Throne’ Seat.



NAME PLATE UNDER LID.



Showing MAHOGANY Seat -

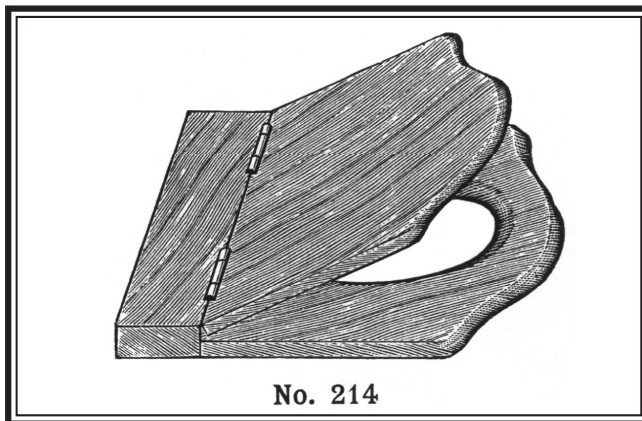
Please see ‘Tropical Hardwoods’ panel on page 24.

THE FOLLOWING ARE BRIEFLY SOME OF THE NUMEROUS FEATURES OF EXCEPTIONAL MERIT

TO WHICH CONSIDERATION IS RESPECTFULLY DIRECTED.

AUTHENTICITY - Our Wooden W.C. Seats are exactly the same as the Victorian originals.

QUALITY - Ordinary varnish, even “yacht varnish,” does not last long in a bathroom so our seats are coated with a special kind of lacquer.



No. 214

AN ENGRAVING OF A WOODEN SEAT FROM ONE OF OUR 1890S CATALOGUES.
(THE UPSTAND & PIPE COVER WAS AN OPTIONAL EXTRA IN VICTORIAN TIMES).

This is an uncharacteristically poor engraving and fails to show that the seat and lid were (and are still today) constructed of three main pieces.



BRITISH MADE.

Oval Wooden Seats for W.C.s.



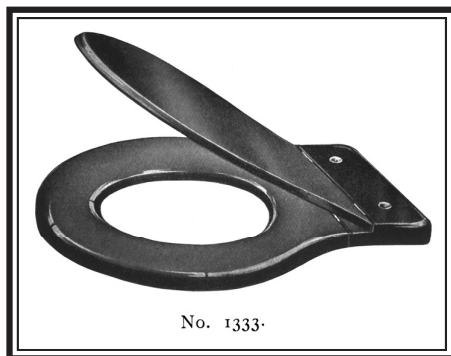
Showing OAK 'Oval' Seat
(also available in mahogany).

No. 1333

THE FOLLOWING ARE BRIEFLY SOME OF THE NUMEROUS
FEATURES OF EXCEPTIONAL MERIT
TO WHICH CONSIDERATION IS RESPECTFULLY DIRECTED.

AUTHENTICITY - Our 'Oval' seats, like our 'Throne' seats, are exactly the same as our Victorian originals.

QUALITY - Ordinary varnish, even "yacht varnish", does not last long in a bathroom, so our seats are coated with a special kind of lacquer.



AN ENGRAVING OF AN OVAL WOODEN SEAT
FROM ONE OF OUR 1890s CATALOGUES.



SUITABLE FOR USE WITH HIGH-LEVEL
OR LOW-LEVEL W.C.s.



TROPICAL HARDWOOD.

Despite considerable research, we remain to be convinced that tropical hardwoods of quality are available from genuinely 'renewable' or 'ethical' sources.

We found *some* supplies which had almost the right credentials but we were unable to obtain the quality and sizes required.

Most tropical timber brought into this country comes with 'official' certificates bearing impressive stamps and endorsements, perhaps intended to give peace of mind to those with ethical concerns. Frankly, we look upon them with some doubt.

THEREFORE – we recommend OAK.

This wood is entirely 'correct' and authentic, as it was a popular choice for Victorian and Edwardian bathrooms.

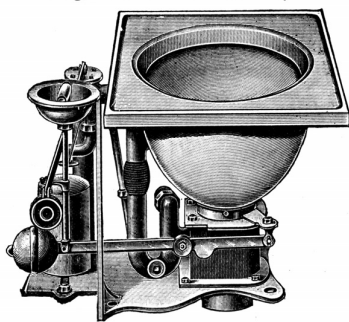
To-day it is subject to few of the concerns raised by the use of hardwoods from the tropics.

Nevertheless, we appreciate that sometimes only mahogany will do, especially if existing woodwork in the bathroom is to be matched.

BUT – if you are undecided, CHOOSE OAK!

VALVE CLOSET.

With Basin and Slop Top in one piece, and Ventilating Union off Overflow Trap.

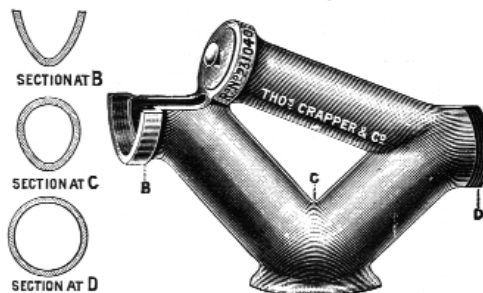


No. 560.

Valve Closet, with White Ware Flushing rim Basin with fixed Slop Top, China Dish, 1-in. Supply Valve, Copper Air Regulator, Ventilating Union off Trap, complete as shown £4 7s. 6d.
If with 1½-in. Valve Extra 3/6
" Box Enamelled inside " 4/9
" Box fitted with Brass Top " 6/3

"THE IMPROVED KENON" Disconnecting Trap.

REGISTERED DESIGN 231,040.



No. 508.

	4 in.	4 to 6 in.	6 in.	9 in.	12 in.
Of Glazed Stoneware ..	8/6	9/6	10/6	22/9	55/-
Improved Channel Pipes, White Glazed ..	2/4	3/4	3/4	5/6	16/6

ENGRAVINGS FROM ONE OF OUR 1890s CATALOGUES.



An example of a cloakroom, furnished with our 22 inch washbasin set and our high-level W.C. with cast '814' cistern and oak 'Throne' seat.

HISTORICAL NOTE.

Wash-hand basins / washbasins / basins were originally referred to as 'lavatories', from the Latin, *lavare*, meaning *to wash*. People began euphemistically to say that they were "going to the lavatory" (i.e. to wash their hands) when in truth they intended to visit the W.C..

Since the mid-twentieth century, the word has become so synonymous with the Water Closet that most people consider 'lavatory' to be the correct term!

Even more confusingly, in some of our early catalogues, the W.C. is often referred to as a 'Pedestal Basin'! However, in America, 'lavatory' is still sometimes used for the Wash-hand Basin.

The W.C. is still a 'W.C.' although many call it a 'Crapper' – after our founder!

THOS. CRAPPER & Co., Ltd., *Sanitary Engineers*



BY APPOINTMENT.

TO
His Majesty the King
AND
H.R.H. The Prince of Wales.



BY APPOINTMENT.



BATHS, LAVATORIES, SINKS, &c.

—
Show Rooms :

120, KING'S ROAD, CHELSEA, S.W.

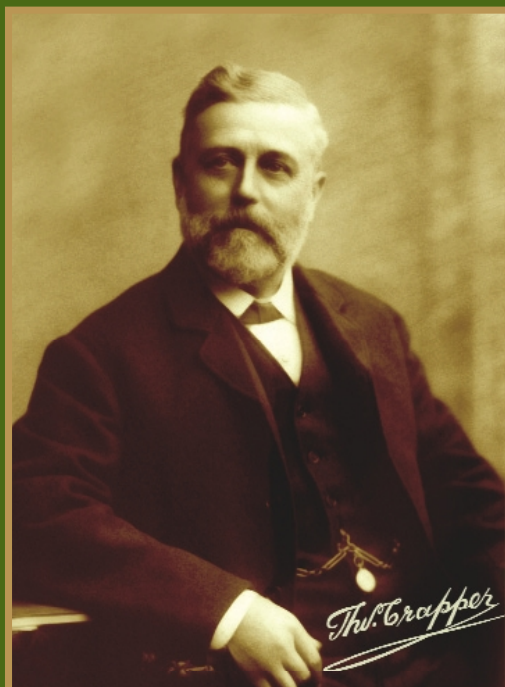
(OPPOSITE ROYAL AVENUE.)

*An advertisement, circa 1908,
illustrating the King's Road premises.
(Closed 1966).*

*The building still exists, used today as a fashion boutique.
When still Crapper & Co., it featured in the opening sequence
of the film 'The Servant.'*

Products by other firms which (unusually) are so authentic, they complement our sanitaryware. Mr. Crapper would approve!

Mr. Crapper



would approve...

Thomas Crapper & Co. began re-manufacturing our products of 100 years ago because we were dissatisfied with so-called 'reproduction' bathroom fittings.

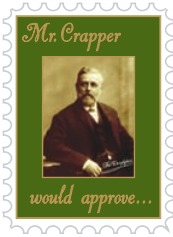
Many such 'reproductions' may be *period-style* but they are seldom authentic. Generally, they are modern basins, W.C.s, taps &c., the moulds for which having been altered in order that the products appear old-fashioned. A few ornate features are added while other details are inevitably omitted. There is mention of 'hand finishing' and 'attention to detail' but, usually, such goods are mass-produced.

Happily there are a few exceptions.

Other firms have produced certain items of comparable quality and authenticity, which complement perfectly our W.C.s and washbasins. We are pleased to supply these selected fittings direct to our customers.

To achieve an harmonious appearance throughout your bathroom, please read on!

Products by other firms which (unusually) are so authentic, they complement our sanitaryware. Mr. Crapper would approve!



BATH/SHOWER MIXER.



For mounting
on rim of bath.

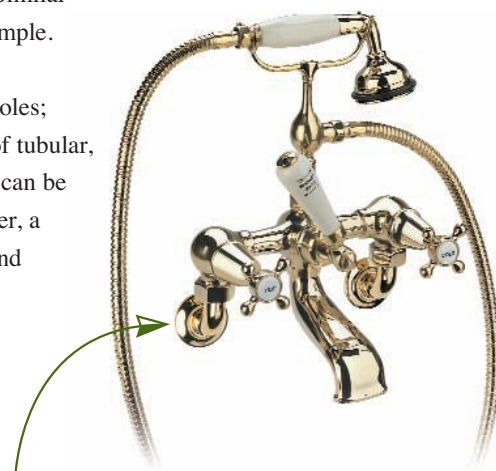
Wonderfully over-engineered in solid brass.

This is the most authentic Bath/Shower Mixer on the market! Similar items made by others are rather flimsy compared with this example.

The main picture shows a mixer designed for a bath with tap holes; this is very easy to install. Alternatively we can supply a pair of tubular, floor-mounted 'Standpipes' for the mixer set so that the whole can be free-standing. This is ideal for baths with no tap-holes. However, a wall-mounted mixer is probably best if the bath has no holes and is against a wall.

If you do not want an handspray, we can offer a simple 'bath filler' which is similar to the above but without the handset cradle, flexible hose and diverter handle.

If the Floor Standpipes or the Bath Filler are of interest, please telephone us for prices.



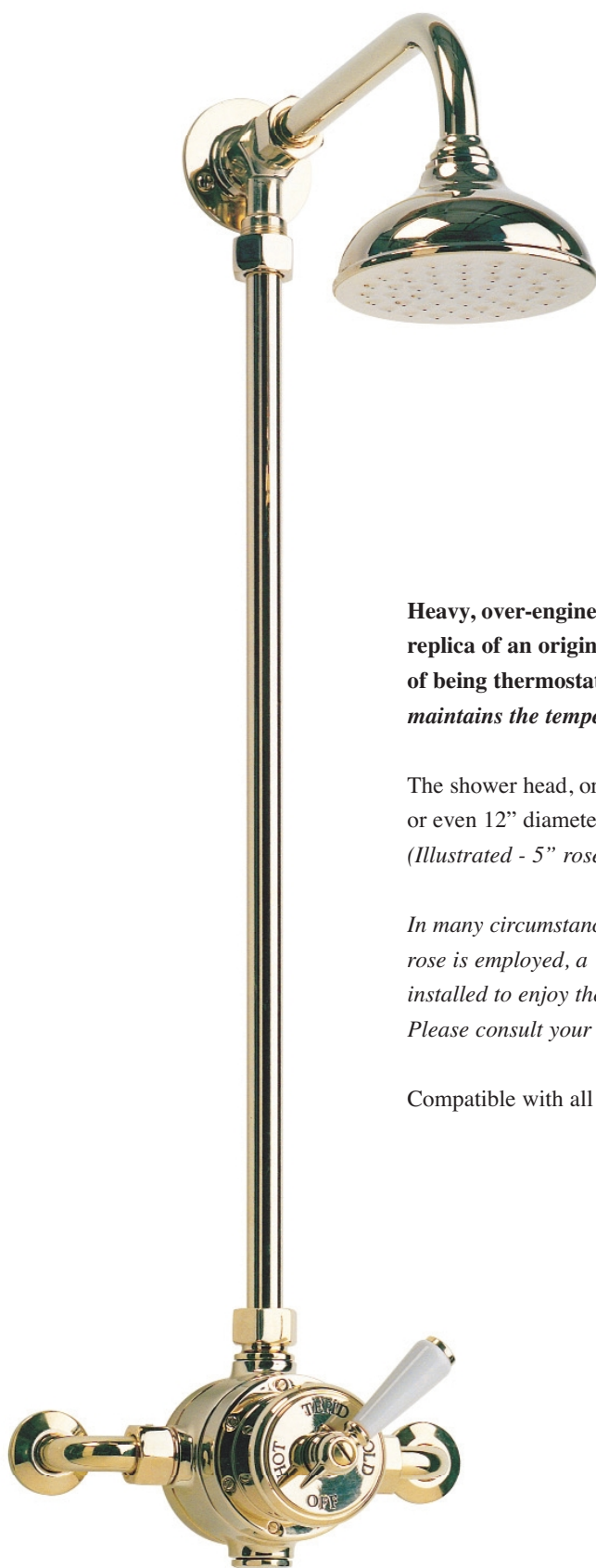
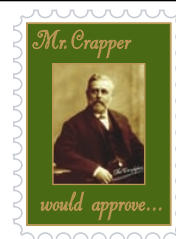
Also available with 'bent unions'
for WALL-MOUNTING.



Available in Polished Brass, Nickel Plate or Chromium Plate
to match Crapper & Co.'s metalwork.

Products by other firms which (unusually) are so authentic, they complement our sanitaryware. Mr. Crapper would approve!

THERMOSTATIC OVER-HEAD SHOWER.



Heavy, over-engineered and an almost exact replica of an original. This shower has the benefit of being thermostatic (unlike the originals), so it maintains the temperature of the water.

The shower head, or 'rose' is available in 5", 8", or even 12" diameters!
(Illustrated - 5" rose, but an 8" looks even better).

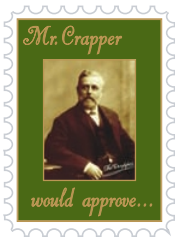
In many circumstances, especially where a large rose is employed, a 'shower pump' needs to be installed to enjoy the full benefit of this device. Please consult your plumber.

Compatible with all British water systems.

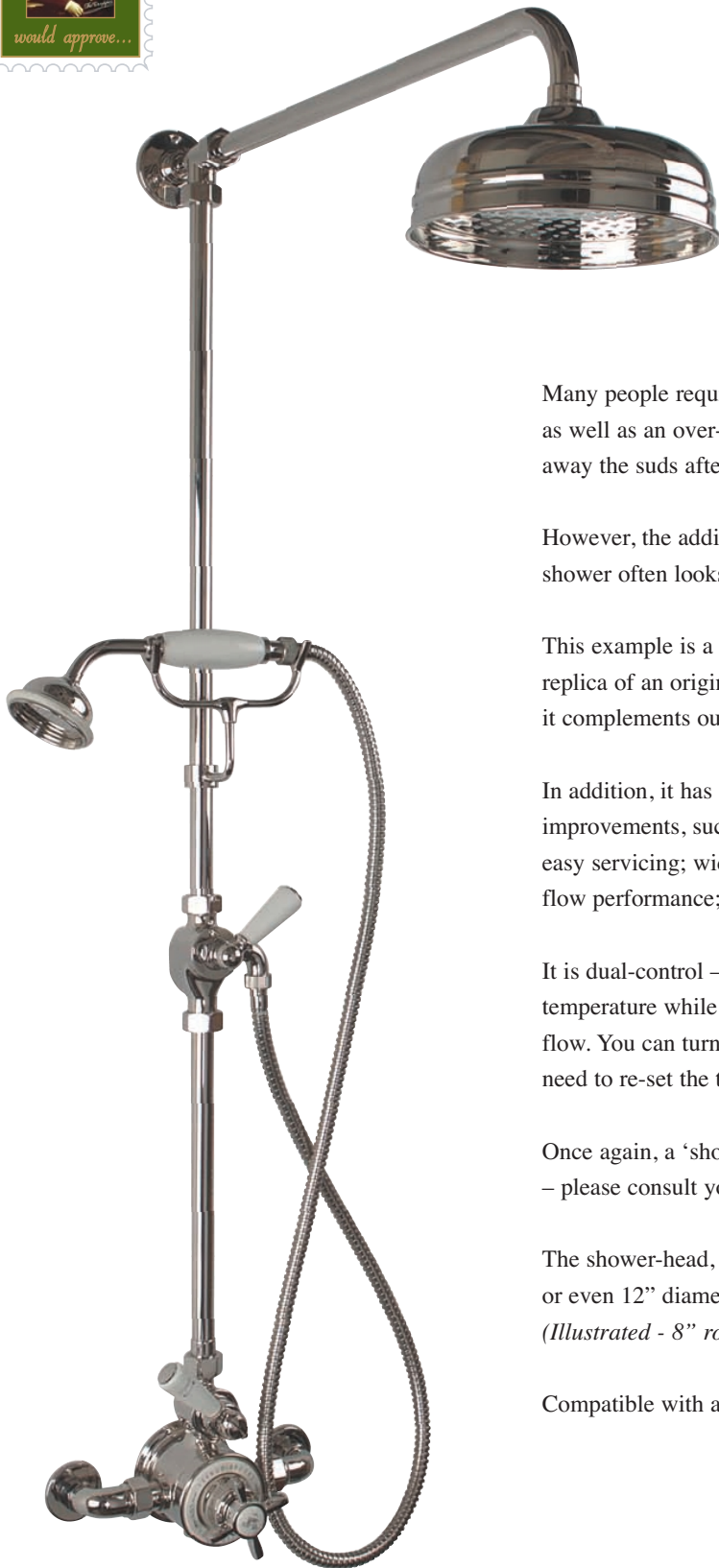
Available in Polished Brass, Nickel Plate or Chromium Plate
to match Crapper & Co.'s metalwork.



Products by other firms which (unusually) are so authentic, they complement our sanitaryware. Mr. Crapper would approve!



THERMOSTATIC OVER-HEAD SHOWER WITH HANDSPRAY.



Many people require the option of using an handspray as well as an over-head shower, if only for washing away the suds after use.

However, the addition of an handset to a traditional shower often looks rather clumsy.

This example is a neat solution. It is not an exact replica of an original, but it is so well designed that it complements our authentic fittings.

In addition, it has a number of useful design improvements, such as: an extractable 'cartridge' for easy servicing; wider water-ways to allow maximum flow performance; an anti-scald device, &c..

It is dual-control – the central 'tap head' sets the temperature while the lever, just above it, controls the flow. You can turn the shower off using the lever – no need to re-set the temperature when you next use it!

Once again, a 'shower pump' is often required – please consult your plumber.

The shower-head, or 'rose', is available in 5", 8", or even 12" diameters!
(Illustrated - 8" rose).

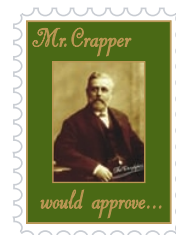
Compatible with all British water systems.



Available in Polished Brass, Nickel Plate or Chromium Plate to match Crapper & Co.'s metalwork.

Products by other firms which (unusually) are so authentic, they complement our sanitaryware. Mr. Crapper would approve!

CURTAIN RAILS.



Oval, with ceiling fixings mounted at 'ends'.

Oval, with ceiling fixings mounted mid-way.



U-shaped.



A range of traditional-style, solid brass tubular curtain rails of quality. Heavy, cast-brass ball-joints and flanges. Wide-bore tube (1¼ inch diameter) gives a solid, chunky appearance.

Angular.



Straight.

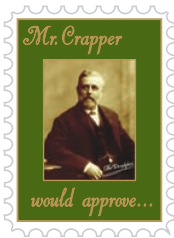


**For standard shower-curtains.
(Not supplied).**

Available in Polished Brass, Nickel Plate or Chromium Plate to match Crapper & Co.'s metalwork.



Products by other firms which (unusually) are so authentic, they complement our sanitaryware. Mr. Crapper would approve!



HEATED TOWEL RAILS.



Wall & Floor-Mounted.

These rails are exact replicas of originals, but **BETTER!** In the old days they were 'soft-soldered' and consequently the joints could crack and cause leaks. The new versions are made of solid brass and are 'hard-soldered' for strength.

Tube diameter - 1 1/4 inch.

If you want your rail to be warm even when the hot water system is switched off, we can supply electrically-heated oil-filled versions, or even 'DUAL-FUEL' rails that run on hot water **OR** electricity!



Wall-Mounted.



Ladder Wall & Floor-Mounted.



Towel-Horse.

SEE PRICE LIST
FOR DETAILS OF
SIZES, B.T.U.s &c..

The prince of towel rails!
More a climbing-frame than a towel rail.
(DO NOT USE AS A CLIMBING-FRAME!). Identical to some original
70-year-old examples that we restored a few years ago.

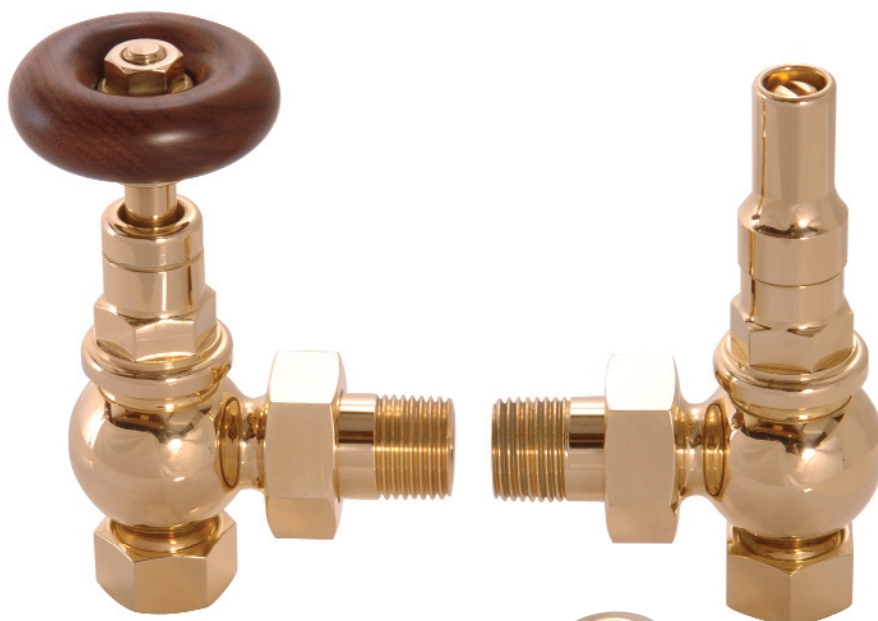
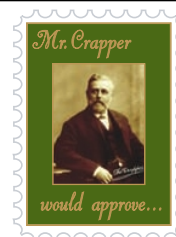


Available in Polished Brass, Nickel Plate or Chromium Plate
to match Crapper & Co.'s metalwork.

Products by other firms which (unusually) are so authentic, they complement our sanitaryware. Mr. Crapper would approve!

VALVES.

For Heated Towel Rails and Central-Heating Radiators.



Half-Inch valves.

$\frac{1}{2}$ " B.S.P. Valves, ideal for heated towel rails and small/medium central-heating radiators. Shown with solid walnut handwheel; also available with black wooden handwheel.

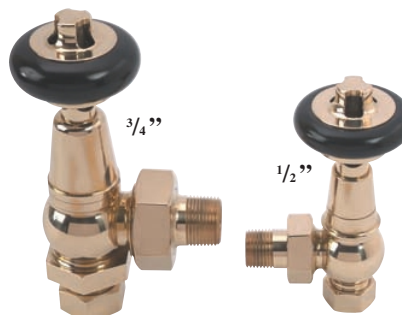


Also available with a metal handwheel.



Three-Quarter-Inch Valves.

$\frac{3}{4}$ " B.S.P. valves, ideal for larger central-heating radiators. Shown with ebonised wooden handwheel but also available in walnut. Large, heavy and simply stunning.



Thermostatic valves.

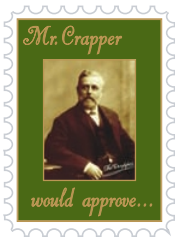
A new option: Modern technology concealed under period detail. Again, wooden handwheels are available ebonised or solid walnut.

Quite the finest valves available anywhere. Beautifully engineered with great attention to detail. These are just like the valves of 80-90 years ago. Such items exude quality; it is these small but authentic features that really 'make' the room. Do not fit them only to your towel rails – your central-heating radiators deserve them too!

Available in Polished Brass, Nickel Plate or Chromium Plate to match Crapper & Co.'s metalwork.



Products by other firms which (unusually) are so authentic, they complement our sanitaryware. Mr. Crapper would approve!



ACCESSORIES.



Glass Shelf with Tumbler Holders and Gallery.
~ Gallery is hinged to allow easier cleaning. ~
(Shelf measures 22" x 5").



Twin Tumbler Holder.



Single Tumbler Holder.



Sponge Basket.



Towel Ring.



Large Soap Dish.
(10" x 5")
~ Ideal for bottles in the shower. ~



Soap Dish.



Ornate-Plate Paper Holder.



Cast-Iron & Oak Paper Holder.



Round-Plate Paper Holder.



Extendible Shaving Mirror.

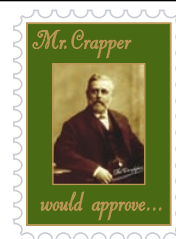
**Complete your bathroom
with these ultra-authentic accessories,
identical to originals in our private collection.**



Available in Polished Brass, Nickel Plate or Chromium Plate
to match Crapper & Co.'s metalwork.

Products by other firms which (unusually) are so authentic, they complement our sanitaryware - Mr. Crapper would approve!

WALNUT CISTERN AND SEAT.



A remarkable alternative to our cast metal and china low-level cisterns.

Simple, elegant lines combined with rather unusual and sumptuous walnut. Hand-made from top-quality solid wood, which conceals a watertight liner and modern internal fittings. The seat is made of the same walnut; both are polished to bring out the beautiful figuring of the grain. Once again, these are authentic copies of originals in our collection. Supplied with a Crapper & Co. china cistern handle.

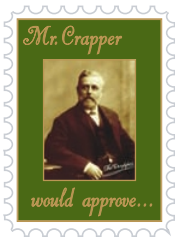
Shown here with Crapper's 'Venerable' W.C. pan, low-level flushpipe and cistern brackets.



Handle and flushpipe available in Polished Brass, Nickel Plate or Chromium Plate.



Products by other firms which (unusually) are so authentic, they complement our sanitaryware. Mr. Crapper would approve!



THE HERTFORD CAST-IRON BATH.



The classic double-ended cast-iron bath. Wider than average, providing a generous and comfortable interior. This version has a ledge with holes for mixer taps, which gives a neat appearance and is easy to install.

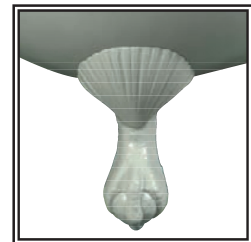
Made of cast-iron and VITREOUS ENAMELLED.

Exterior and feet supplied bare, for painting in ANY colour.

Size - 5'9" x 31½". Tap shelf extends a further 2⅜".

It is almost always the poorly-detailed feet that spoil the appearance of most reproduction baths.

These claw & ball feet, with scallop-shell uppers, are crisp, sharp and truly authentic.



THE GLOUCESTER CAST-IRON BATH.



Identical to the HERTFORD but without tap shelf. This bath is intended for use with wall-mounted or floor-mounted mixer taps.

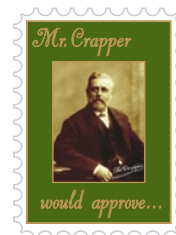
Exterior and feet supplied bare, for painting in ANY colour.



Products by other firms which (unusually) are so authentic, they complement our sanitaryware. Mr. Crapper would approve!

THE SPEY CAST-IRON BATH.

**A classic, double-ended bath of MONUMENTAL proportions!
The roll measures an improbable five inches in width. Overall length is 6'4".**



**'Double-enders', by repute, are intended for bathing 'à deux' but most are far too small.
To have company is not only possible in this bath, it is comfortable too.**
(Admittedly, we are unsure what the pious Mr. Crapper would think about this! Our advice?
If you have the space, do not hesitate).

Cast from an original in iron and properly VITREOUS ENAMELLED. For use with wall-mounted Bath/Shower Mixer or floor-mounted Bath/Shower Mixer and Floor Standpipes.

Exterior supplied bare, for painting in ANY colour.

THE USK CAST-IRON BATH.

An exact replica of the French 'Bateau' or 'Boat' Bath. Original examples tend to be somewhat narrow but this is a replica of one of the rarer, wider and therefore more comfortable versions.



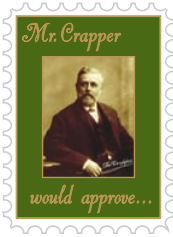
Again, made of cast-iron and VITREOUS ENAMELLED. For use with a wall-mounted Bath/Shower Mixer or floor-mounted Bath/Shower Mixer and Floor Standpipes.

We advise raising the floor around this bath by at least six inches – not only is this aesthetically pleasing but also an access to the waste trap can be incorporated for servicing in the future.

Exterior supplied bare, for painting in ANY colour.



Products by other firms which (unusually) are so authentic, they complement our sanitaryware. Mr. Crapper would approve!



COPPER BATEAU BATHS.

Copper baths have been around for hundreds of years, especially in Europe. This is the classic French pattern dating from the 18th and 19th centuries.



*Tinned
Interior.*



Polished copper, inside and out.



Polished brass, inside and out.

Polished areas are lacquered, to preserve the shine. Alternatively we can supply a bare, unsealed finish which will tarnish naturally.

~ No more cold shoulder-blades!

Copper and brass conduct heat so well that the hot water warms ALL of the bath, even above the water line. ~

Measuring (roughly) 5'7" by 27" and 28" high, these authentic replicas (hand-beaten in 'the old Empire'!) are available in a variety of finishes and can be supplied with or without an overflow. Ideal for wall-mounted taps or mixers on Floor Standpipes. The choice includes a traditional hand-tinned interior, or polished copper inside and out.

A stunning new option is an all-BRASS bath!



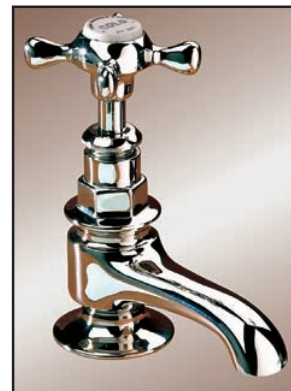
Colour Guide.



POLISHED BRASS.



NICKEL PLATE.



CHROMIUM PLATE.

N.B. Polished Brass is a bare, un-sealed brass finish and will require regular polishing to retain the colour and shine.

Polished Brass and Nickel Plate were the predominant finishes available until 1929, when Chromium Plate began its establishment as the most popular and most resistant coating.



WHITE.

'Antique-White' is our own shade – a softer white. 100 years ago, most chinaware was not brilliant white, so this shade provides even more authenticity. Sanitaryware in 'Antique-White' mixes well with old bathroom fittings.



ANTIQUÉ WHITE.



OAK.



MAHOGANY.

Due to vagaries within the photographic and printing processes, this page is intended as only a GUIDE.

ARCHIVES.



These are a few of the original accounts from our archives, some of which date from the establishment of the firm in 1861.

The leather-bound, gold-tooled ledgers contain entries in Mr. Crapper's 'copperplate' handwriting.

Also shown are several of the founder's Victorian patents (bottom left), old catalogues and the company's official seal (centre left). The latter is still used for endorsing documents and share certificates.

TESTIMONIALS.

We are grateful for the following **unsolicited** endorsements from *the three foremost authorities*; a 'flush' of pre-eminent bathroom historians!



Lucinda Lambton.

Acclaimed photographer, architectural historian, author and broadcaster. Work includes 'Temples of Convenience' (book), 'On the Throne' and 'The Alphabet of Britain' (B.B.C. Television).

"TERRIFIC!! I have to rub my eyes in wondrous disbelief at the splendours you produce. With the happiest mix of distinguished scholarship and sensational salesmanship, you are doing great honour to the memory of Thomas Crapper. I am full of admiration."



Dr. Adam Hart-Davis.

Respected scientist, author, columnist and broadcaster. Work includes the book and B.B.C. Television series 'What the Victorians did for us.'

"Fundamentally, the lavatory works; it is comfortable, and the thunderous flush is highly efficient. ...Thomas Crapper lavatories are superb."



David J. Eveleigh.

Social historian, museum curator and author of the most diligently researched, well-illustrated and *readable* book on the subject: 'Bogs, Baths and Basins.'

"...these products are not generalised patterns made in the usual diluted 'heritage' style; they are almost identical to those in 1880's - 1900's catalogues. The attention to detail is quite remarkable. A skilful blending of modern materials with careful attention paid to the original designs."

THOMAS CRAPPER & COMPANY.

Offices and Stores:

The Stable Yard, Alscot Park, Stratford-on-Avon, Warwickshire. (CV37 8BL)

Electric Messages: wc@thomas-crapper.com

Electric Information: thomas-crapper.com

Telephone: Alderminster (01789) 450 522.

Facsimile: Alderminster (01789) 450 523.

FROM OVERSEAS – Telephone: + 44 1789 450 522.

Facsimile: + 44 1789 450 523.